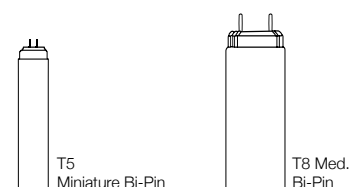


LINEAR FLUORESCENT LAMPS



Bulb	Watts	Product Number	Footnotes	Product Code	Description	Pkg. Qty.	Color Temp.	CRI	Initial Lumens	Mean Lumens	Avg. Life	Nom. Length
ProLume T-5 Programmed Start - Miniature Bi-Pin Eco-Shield® continued												
T5	35	35049	1,7	F35T5/835/ECO/IC	835 Phosphor	25	3500	86	3650	3450	24000	58"
	35	35050	1,7	F35T5/841/ECO/IC	841 Phosphor	25	4100	86	3650	3450	24000	58"
	39	35060	X 1,7	F39T5/830/HO/ECO/IC	830 Phosphor High Output	25	3000	86	3500	3320	24000	34"
	39	35061	1,7	F39T5/835/HO/ECO/IC	835 Phosphor High Output	25	3500	86	3500	3320	24000	34"
	39	35062	1,7	F39T5/841/HO/ECO/IC	841 Phosphor High Output	25	4100	86	3500	3320	24000	34"
	49	35085	Ⓜ \$ 1,7	F49T5/835/HO/ECO	835 Phosphor High Output, Energy Saver	25	3500	86	4900	4700	24000	46"
	49	35088	Ⓜ \$ 1,7	F49T5/841/HO/ECO	841 Phosphor High Output, Energy Saver	25	4100	86	4900	4700	24000	46"
	49	35089	Ⓜ \$ 1,7	F49T5/850/HO/ECO	850 Phosphor High Output, Energy Saver	25	5000	86	4900	4700	24000	46"
	54	35081	Ⓜ 1,7	F54T5/830/HO/ECO/IC	830 Phosphor High Output	25	3000	86	5000	4850	24000	46"
	54	35082	Ⓜ 1,7	F54T5/835/HO/ECO/IC	835 Phosphor High Output	25	3500	86	5000	4850	24000	46"
	54	90051	Ⓜ 1,7	F54T5/835/HO/ECO/IC/CS	835 Phosphor High Output, CoverShield®	25	3500	86	5000	4850	24000	46"
	54	35070	Ⓜ X 1,7	F54T5/835/HO/ECO/XL	835 Phosphor High Output, Extended Life	25	3500	86	5000	4790	40000	46"
	54	105680	Ⓜ 1,7	F54T5/841/HO/ECO	841 Phosphor High Output	25	4100	86	5000	4850	24000	46"
	54	35083	Ⓜ 1,7	F54T5/841/HO/ECO/IC	841 Phosphor High Output	25	4100	86	5000	4850	24000	46"
	54	90052	Ⓜ 1,7	F54T5/841/HO/ECO/IC/CS	841 Phosphor High Output, CoverShield®	25	4100	86	5000	4850	24000	46"
	54	35071	Ⓜ X 1,7	F54T5/841/HO/ECO/XL	841 Phosphor High Output, Extended Life	25	4100	86	5000	4790	40000	46"
	54	35084	Ⓜ 1,7	F54T5/850/HO/ECO/IC	850 Phosphor High Output	25	5000	86	5000	4850	24000	46"
	54	90053	Ⓜ 1,7	F54T5/850/HO/ECO/IC/CS	850 Phosphor High Output, CoverShield®	25	5000	86	5000	4850	24000	46"
	54	35072	Ⓜ X 1,7	F54T5/850/HO/ECO/XL	850 Phosphor High Output, Extended Life	25	5000	86	5000	4790	40000	46"
	54	35086	Ⓜ 1,7	F54T5/865/HO/ECO/IC	865 Phosphor High Output	25	6500	86	5000	4850	24000	46"
	80	35087	1,7	F80T5/835/HO/ECO	835 Phosphor High Output	25	3500	86	7000	6650	24000	57.1"
	80	35090	1,7	F80T5/841/HO/ECO	841 Phosphor High Output	25	4100	86	7000	6650	24000	57.1"

ProLume T-8 Rapid Start - Medium Bi-Pin Eco-Shield®

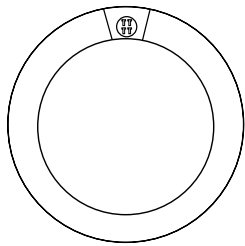
T8	17	109320	1	F17T8/730/ECO	730 Phosphor	25	3000	78	1350	1280	24000	24"
	17	109322	1	F17T8/735/ECO	735 Phosphor	25	3500	78	1350	1280	24000	24"
	17	109324	1	F17T8/741/ECO	741 Phosphor	25	4100	78	1350	1280	24000	24"
	17	109326	1	F17T8/750/ECO	750 Phosphor	25	5000	78	1350	1280	24000	24"
	17	35170	1	F17T8/830/ECO	830 Phosphor	25	3000	86	1400	1330	24000	24"
	17	109802	1	F17T8/835/ECO	835 Phosphor	25	3500	86	1400	1330	24000	24"
	17	109804	1	F17T8/841/ECO	841 Phosphor	25	4100	86	1400	1330	24000	24"
	17	35180	1	F17T8/850/ECO	850 Phosphor	25	5000	86	1400	1330	24000	24"

Ⓜ Means this lamp meets Federal Minimum Efficiency standards.
Linear Fluorescent lamp symbols, footnotes and abbreviations are located on pages 90-91.

LINEAR FLUORESCENT LAMPS

Bulb and Base Identification Guide

Bulb Shapes



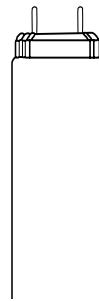
Circline



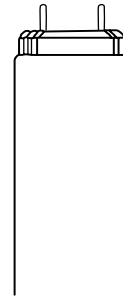
T5



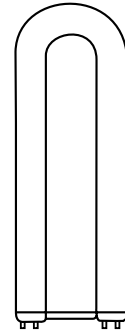
T6



T8

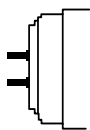


T12

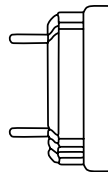


U-Bend

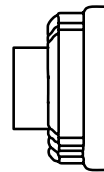
Base Types



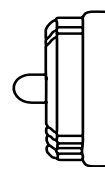
Miniature
Bi-Pin



Medium
Bi-Pin



Recessed DC




Single Pin

LINEAR FLUORESCENT

Symbols, Footnotes and Abbreviations

SYMBOLS

\$	Energy saving product.
Ⓢ	This lamp meets Federal Minimum Efficiency standards.
	ProLume® Eco-Shield® Low-Mercury Fluorescent lamps pass the Federal TCLP for hazardous wastes.
X	Product will be discontinued when inventory is depleted.
L	Legislated lamp will not be manufactured after July 14, 2014.

FOOTNOTES

1	Average life under specified test conditions with lamps turned off and restarted every three hours. Lamp life is longer if lamps are started less frequently.
2	Commercial average rated life under specified test conditions with lamps turned off and restarted every twelve hours. Lamp life is longer if lamps are started less frequently.
3	Nominal length is measured from face of base to maximum distant outside point of U-Bend. Leg spacing measured center to center is approximately 6" for /6 product, 3-5/8" for /3 product and 1-5/8" for FB31 product.
4	Initial lumens are based on 800-mA. operation. For 1000mA. operation, lumens are approximately 10% higher and wattage approximately 15% higher.
5	This energy saving lamp is only recommended for use on high power factor lead, indoor ballasts that meet ANSI standards. The lamp is not recommended for use in drafty areas or locations where the ambient temperature drops below 60°F, except as noted. Do not operate on low power factor ballasts, reduced light or reduced current ballasts, dimming ballasts or emergency system inverter ballasts.
6	Meets the National Energy Policy Act (EPACT) of 1992 exemption for outdoor or cold temperature applications only.
7	Lamp designed for use with Programmed Start ballast.
8	This lamp should only be operated on high efficiency or anti-striation type ballasts.

LINEAR FLUORESCENT

Symbols, Footnotes and Abbreviations

ABBREVIATIONS

3	Code abbreviation for 3-5/8" U-Bend lamps.
6	Code abbreviation for 6" U-Bend lamps.
/730	Suffix used to indicate lamps with CRI of 70+ and color temperature of 3000K.
/735	Suffix used to indicate lamps with CRI of 70+ and color temperature of 3500K.
/741	Suffix used to indicate lamps with CRI of 70+ and color temperature of 4100K.
/750	Suffix used to indicate lamps with CRI of 70+ and color temperature of 5000K.
/765	Suffix used to indicate lamps with CRI of 70+ and color temperature of 6500K.
/830	Suffix used to indicate lamps with CRI of 80+ and color temperature of 3000K.
/835	Suffix used to indicate lamps with CRI of 80+ and color temperature of 3500K.
/841	Suffix used to indicate lamps with CRI of 80+ and color temperature of 4100K.
/850	Suffix used to indicate lamps with CRI of 80+ and color temperature of 5000K.
/865	Suffix used to indicate lamps with CRI of 80+ and color temperature of 6500K.
BL	Code abbreviation for Blacklight lamps.
BLB	Code abbreviation for Blacklight-Blue lamps.
/CS	Suffix used to indicate CoverShield® safety coated lamps.
CW	Code abbreviation for Cool White lamps.
CWS	Code abbreviation for Cool White Supreme lamps.
CWX	Code abbreviation for ProLume® Cool White Deluxe lamps.
DL	Code abbreviation for Daylight lamps.
DX	Code abbreviation for Daylight lamps.
/ECO	Suffix used to indicate Eco-Shield® TCLP compliant lamps.
/ES	Suffix used to indicate Energy Saving Fluorescent lamps.
FB	Prefix used to indicate for Fluorescent U-Bend lamps.
FC	Prefix used to indicate for Fluorescent Circline lamps.
/HL	Suffix used to indicate High Lumen lamps.
/HO	Suffix used to indicate High Output lamps.
HOES	Code abbreviation to indicate High Output Energy Saver lamps.
HOO	Code abbreviation to indicate High Output lamps for outdoor or low temperature operation.
/IC	Suffix used to indicate ProLume® Industrial/Commercial service lamps.
/M	Suffix used to indicate Major brand Fluorescent lamps (GE, Philips, Osram/Sylvania).
/VHO	Suffix used to indicate Very High Output lamps.
WW	Code abbreviation for Warm White lamps.
/XL	Suffix used to indicate Extended Life lamps.